

# Supreme Court of the Netherlands

## Location

The Hague, NL

## Client

Rijksvastgoedbedrijf

## Initiated

2012

## Completion

2016

## Size

18.000 m<sup>2</sup>

## Project Team

Allard Assies, Luca Baialardo, Christophe Banderier, Bas Barendse, Dennis Bruijn, Timo Cardol, Sebastian van Damme, Marten Dashorst, Luuk Dietz, Willemijn van Donselaar, Paolo Faleschini, Raluca Firicel, Michael Geensen, Cristina Gonzalo Cuairán, Joost Harteveld, Walter Hoogerwerf, Michiel van der Horst, Marlon Jonkers, Jan Teunis ten Kate, Marco Lanna, Giuseppe Mazzaglia, Ana Rivero Esteban, Joeri Spijkers, Koen van Tienen, Noëmi Vos

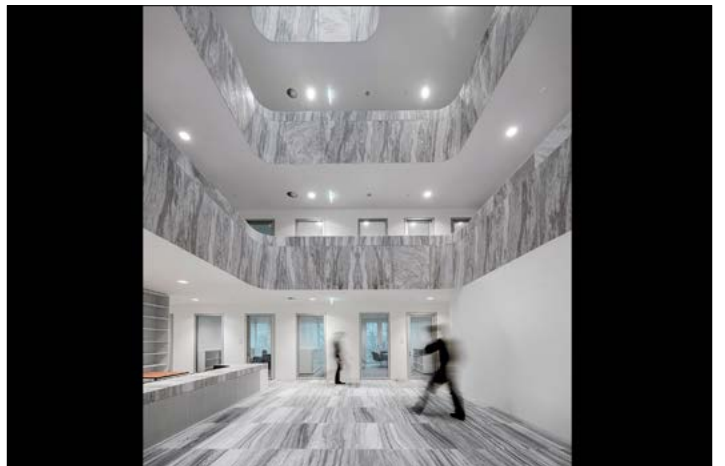


The building is located in the historic city center of The Hague along the Korte Voorhout and adjacent to Malieveld park. The new design, with the measured vibrancy of its facades, interacts with the trees across the street announcing the city gateway.

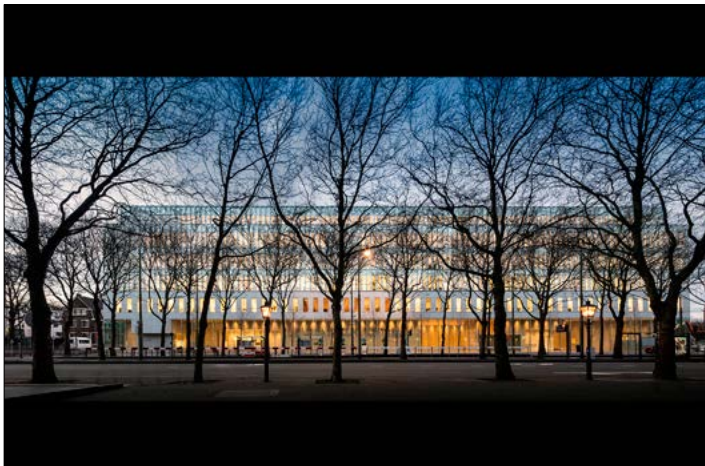
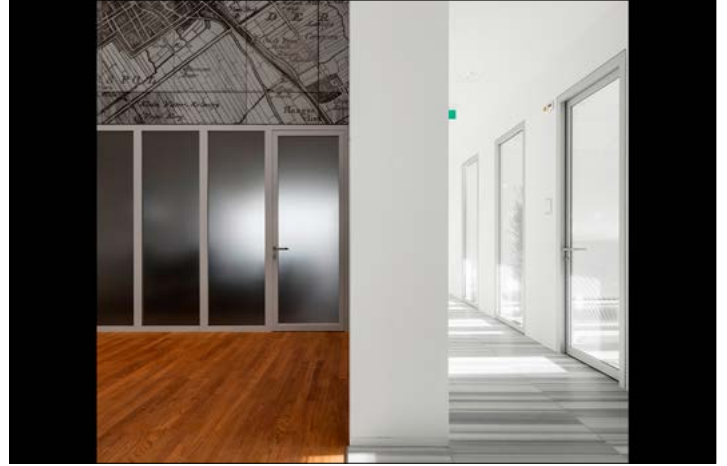
The main entrance is flagged by six bronze statues, with a single pane of glass subtly marking the transition from the street to the interior. The transparency of the building signifies both accessibility to the public as well as the soundness and clarity of judgment. The entrance hall with courtrooms forms the public area and double height ceilings span the full length of the building. The floors and walls are of a light grey limestone that exudes a velvety texture. The upper floors accommodate offices, a library with study places, a restaurant, and council and meeting chambers.

Daylight permeates the building through several skylights, forming the core of the distinct domains of the Council and Procurator General Office. The light, the sightlines throughout the space, and the open perspective inspire social interaction, encourage the exchange of ideas and opinions, and allows for informal gatherings.

# Supreme Court of the Netherlands



# Supreme Court of the Netherlands



# Supreme Court of the Netherlands

